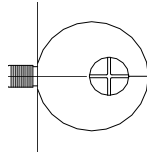


# STANDFAST KITCHEN KITS

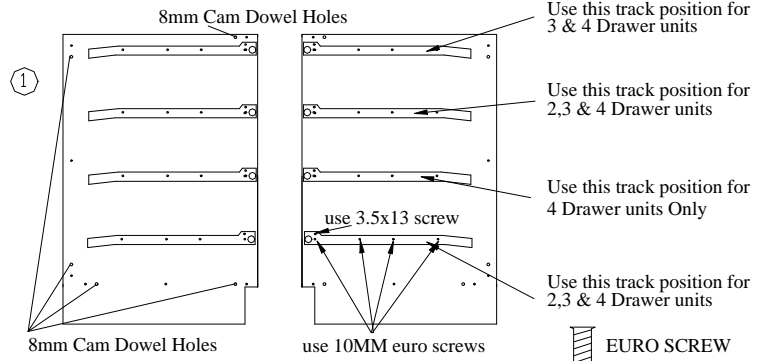
## HOW TO ASSEMBLE YOUR DRAWER MODULE

1. Assemble one unit at a time as you unpack it.

2. Insert cams into cam holes in Base, Back & Rail, with screw side facing up.



3. Lay left & right Sides face down on a flat surface with white edging to centre. Now fit runners to sides using euro screws provided as diagram (1)

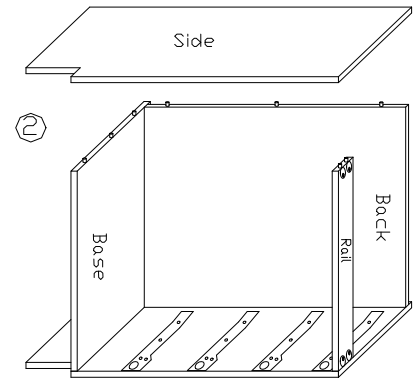


4. Attach Base, Back & Rail to one Side as diagram (2) by inserting cam dowels into matching holes. Align parts and lock cams on each piece as you proceed by turning cam screws 180deg. Make sure cams are facing out, and white edging is to front.

5. Attach remaining opposite Side onto cam dowels as diagram (2) and then lock those cams.

6. Now install your unit making sure it is level and square.

7. It may be necessary to plane the back fin off the carcass to get a closer fit to the wall.



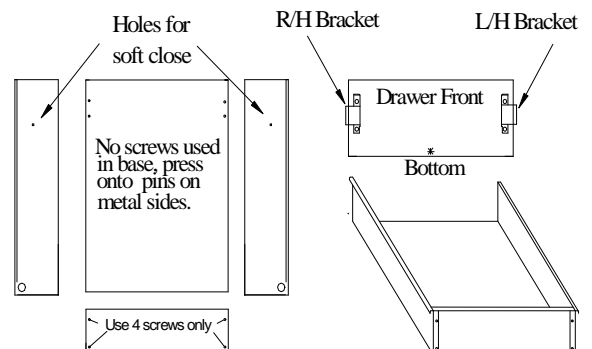
### DRAWER ASSEMBLY

1. Fit 16mm white Drawer Back onto metal drawer sides using 4-euro screws supplied.

2. Locate 16mm white Drawer Base onto pins on metal sides and push down firmly.

3. Slide assembled Drawer into tracks in Drawer Unit Carcase.

4. Fit left & right brackets to Drawer Front as diagram. (Make sure marked edge is to bottom,) and clip Drawer Front to Drawer Sides.



### TOOLS REQUIRED:

Spirit Level,  
Screwdriver (supplied)  
Cordless drill.