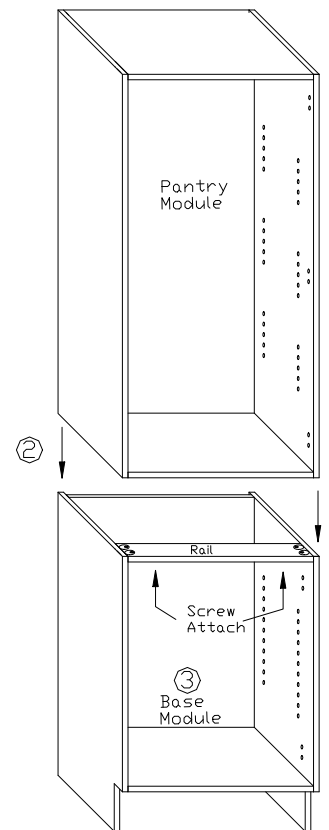
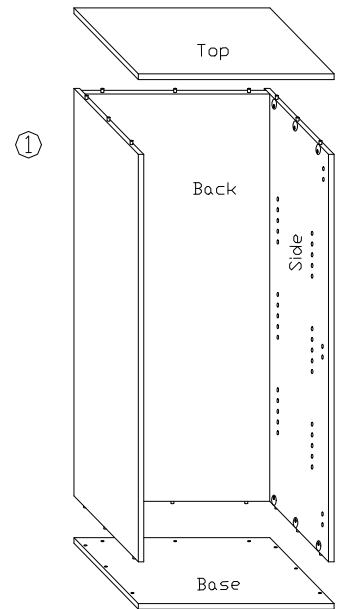
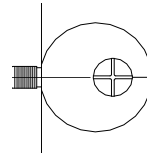


STANDFAST KITCHEN KITS

PANTRY MODULE

ASSEMBLY INSTRUCTIONS

1. Assemble one Module at a time as you unpack it.
2. The Pantry Module is made up from TWO modules. The bottom Module can be either a Standard Base Module (Diagram (3)) or a Drawer Module, the bottom module should be assembled first using the accompanying assembly sheet.
3. (Top) Pantry Module. First insert cams into cam holes in Sides & Back, with screw side facing up.
4. Attach both Sides onto matching cam dowels on the Pantry Back, as in diagram (1) (Cams on the Back should be facing OUT and cams on the Sides facing IN.) Align parts and lock cams on each piece as you proceed by turning cam screws 180deg.
5. Attach Top & Bottom onto cam dowels on Sides & Back as in diagram (1) and lock those cams.
6. Installation: To avoid heavy lifting first place the Base Module in the required position. The Pantry Module can now be attached to Base Module as in diagram (2) by screwing through the Base Module Rail and into the Pantry base using 30mm screws.
7. Now install your unit making sure it is level and square.
8. Note: If using a Corner Unit, make sure this is the first unit installed and work your way out from there with standard units. See separate sheet for Corner Unit Assembly.
9. Insert Shelf supports and place Shelves into position.
10. Insert hinges into Door/s and lock by turning screws ¼ turn clockwise. Screw hinge-mounting plates to cabinet and clip on doors. Attach Handle/s.



TOOLS REQUIRED:
Spirit Level,
Screwdriver (supplied)
Cordless drill.