

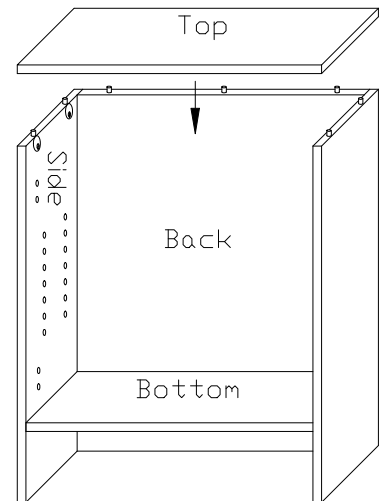
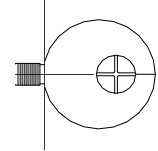
STANDFAST KITCHEN KITS

TYPICAL RANGEHOOD UNIT QTS

ASSEMBLY INSTRUCTIONS

USING CAM FITTINGS

1. Please Note: This Unit has been made to suit YOUR Rangehood Specifications.
2. Insert cams into cam holes in Sides & Back, with screw side facing up.
3. Attach Bottom to Back as per Diagram. (Cams face down on Bottom and to the wall on Back.)
4. Attach both Sides onto matching cam dowels on Back. (Cams on the Back should be facing out, and cams on the Sides facing in.) Align parts and lock cams on each piece as you proceed by turning cam screws 180deg.
5. Attach Top onto cam dowels on Sides & Back and then lock those cams.
6. Now install your unit making sure it is level and square.
7. Insert Shelf supports and place Shelf into position.
8. Insert hinges into Door/s, then lock hinge by pressing Hinge Flap closed. Screw hinge-mounting plates to cabinet and clip on doors. Attach Handle/s.
9. IMPORTANT NOTE: You should ASSURE the distance between your Cooktop and your Rangehood meets Specifications.



TOOLS REQUIRED

Spirit Level
Screwdriver (supplied)
Cordless drill