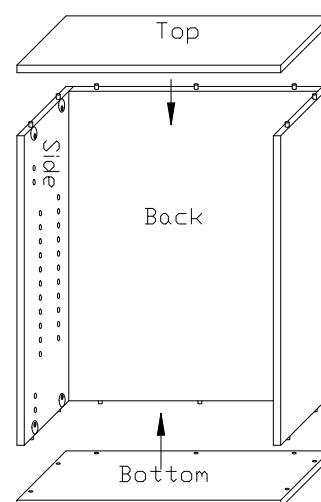
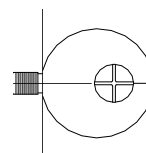


# STANDBAST KITCHEN KITS

## HOW TO ASSEMBLE YOUR WALL UNIT MODULE

1. Assemble one unit at a time as you unpack it.
2. Insert cams into cam holes in Sides & Back, with screw side facing up.
3. Attach both Sides onto matching cam dowels on Back. (Cams on the Back should be facing out, and cams on the Sides facing in.) Align parts and lock cams on each piece as you proceed by turning cam screws 180deg.
4. Attach Top & Bottom onto cam dowels on Sides & Back and then lock those cams.
5. Now install your unit making sure it is level and square.
6. If using a Corner Unit, make sure this is the first unit installed and work your way out from there with standard units. See separate sheet for Corner Unit Assembly.
7. Insert Shelf supports and place Shelf into position.
8. Insert hinges into Door/s and lock by turning screws ¼ turn clockwise. Screw hinge-mounting plates to cabinet and clip on doors. Attach Handle/s.



### TOOLS REQUIRED

Spirit Level  
Screwdriver (supplied)  
Cordless drill